



# MONTHLY MEMBERSHIP PROGRESS REPORT

District 3 L

Results as of: 9/30/2014

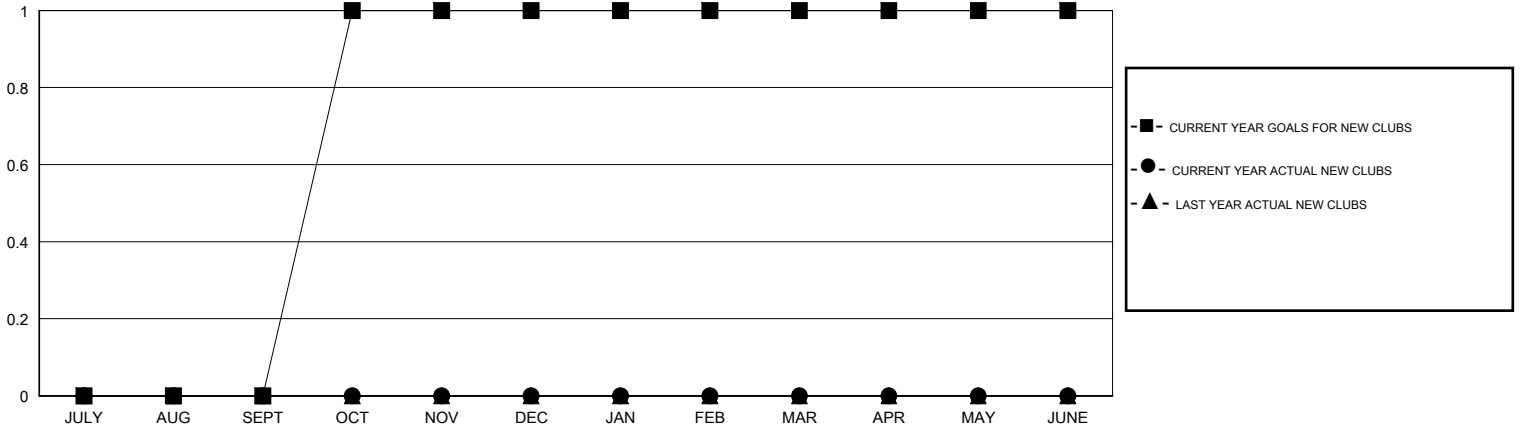
GMT: HAL GRIFFIN

LOCATION OKLAHOMA

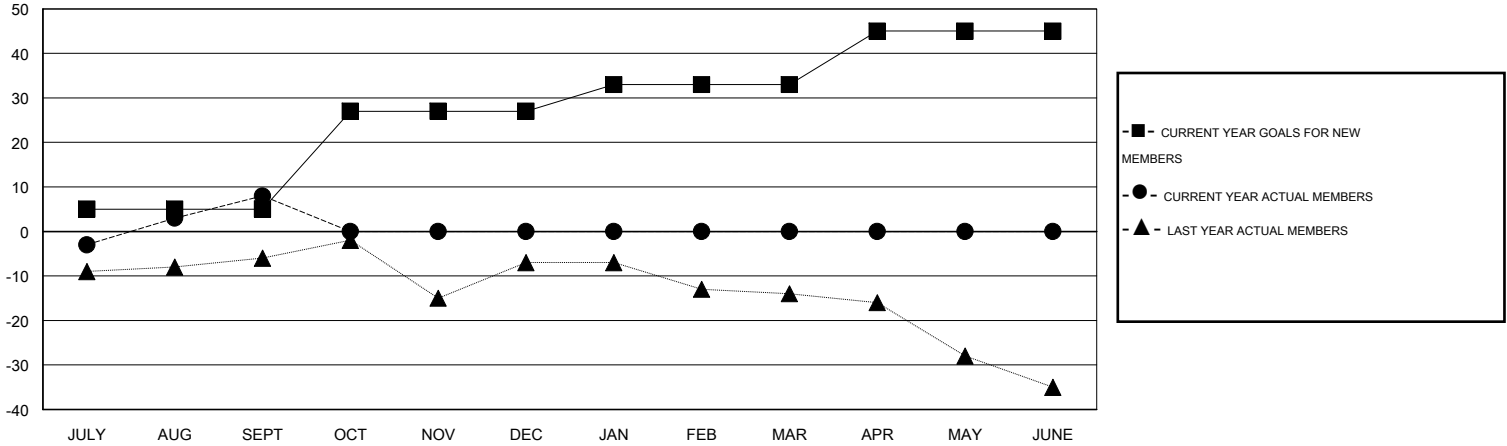
GMT CA 1

Clubs					Members				
RESULTS FOR 2014-2015					RESULTS FOR 2014-2015				
QUARTER	NEW CLUB GOAL	NEW CLUBS	DROPPED CLUBS	NET GAIN/LOSS	QUARTER	NEW MEMBER GOAL	CHARTER AND NEW MEMBERS ADDED	DROPPED MEMBERS	NET GAIN/LOSS
JULY/AUG/SEPT	0	0	0	0	JULY/AUG/SEPT	5	24	16	8
OCT/NOV/DEC	1	0	0	0	OCT/NOV/DEC	22	0	0	0
JAN/FEB/MAR	0	0	0	0	JAN/FEB/MAR	6	0	0	0
APR/MAY/JUNE	0	0	0	0	APR/MAY/JUNE	12	0	0	0

GOALS AND ACTUAL NEW CLUBS CUMULATIVE



GOALS AND ACTUAL MEMBERS CUMULATIVE



DROPPED CLUBS: 0	14 CLUBS OF 36 ADDED 1 OR MORE NEW MEMBERS	<b>GENDER DISTRIBUTION</b> MALE 543 (67.71%) FEMALE 259 (32.29%)
<b>DROPPED MEMBERS</b> DECEASED 1 CLUB CANCELLED 0 OTHER 15 TOTAL 16	<a href="#">CLICK HERE FOR HEALTH ASSESSMENT DATA</a>	FAMILY UNIT MEMBERS 115 HEAD OF HOUSEHOLD 57 NON-HEAD OF HOUSEHOLD 58